



## **JiuYao Electronic Science & Technology (Jiangsu) Co., Ltd.**

Add: Industrial Zone, East Shuanggou Town, Hongze District, Huai'an 223121, Jiangsu, China

TEL:+86 137 7512 6941 info@ptfe-pcb-laminate.com www.ptfe-pcb-laminate.com

### **ABOUT JiuYao**

JiuYao is a leading manufacturer of PTFE and silicone composite material for more than 10 years, main products include PTFE coated fiberglass with and without adhesive, PTFE conveyor belts, skived PTFE tapes, silicone coated fiberglass, Teflon baking sheets and silicone baking mats. They are widely used in almost all the industry sector like aerospace, chemicals, automobile, medicals, electronics, plastics, printing, textile, food processing, etc. Since its foundation, the company keeps living up to the belief of "honest selling, superior quality, people-orientation and benefits to customers", our products are exported to countries all over the world and gain recognition by our customers.



### **ADVANCED EQUIPMENTS**

JiuYao bring in advanced equipment from home and abroad, we import Karl Mayer full automatic high warping machine and Dornier wide loom from Germany, in order to improve dipping quality and efficiency, we cooperate with professional equipment designer to improve our dipping and drying machines, currently we have 12 vertical dipping lines for PTFE impregnating, 3 horizontal coating lines for silicone coating and pressure sensitive adhesive coating. As the increasing demanding of Silicone and PTFE fabrics, JiuYao expanded factory workshop, now, the workshop covers an area of 20000 square meters with 120 employees. In order to create a experienced team, we commit ourselves to provide technical training for our employees. They are professional at controlling PTFE content, tensile strength and surface performance, slitting tapes in accurate sizes, customizing belts according to customer' s request efficiently and in superior quality.



## Jiu Yao Electronic Science & Technology (Jiangsu) Co., Ltd.

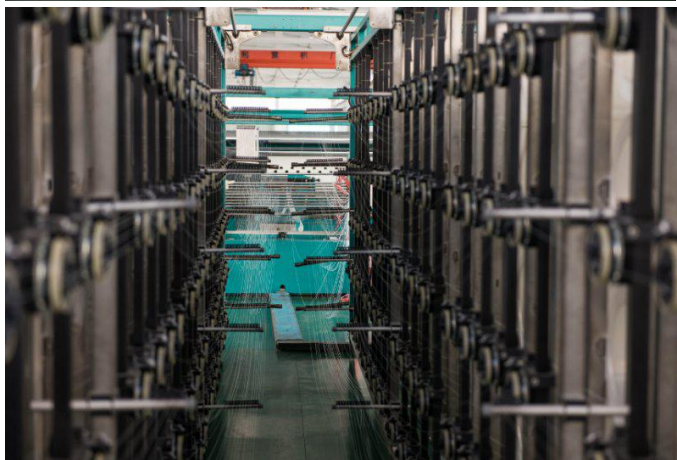
Add: Industrial Zone, East Shuanggou Town, Hongze District, Huai'an 223121, Jiangsu, China

久耀电子

TEL:+86 137 7512 6941

info@ptfe-pcb-laminate.com

www.ptfe-pcb-laminate.com



### PTFE COATED FIBERGLASS

PTFE coated fiberglass is composed of woven glass fibers coated with PTFE, provide nonstick, heat resistant(-73 ° C to +260 ° C/-100 ° F to +500 ° F), chemical resistant, dimension stable, electrical insulation and high tensile strength properties. JiuYao provide PTFE coated fiberglass divided to premium series, industrial series, porous series, anti-static series and one-side coating series.

#### Applications

- Aerospace
- Food Processing
- Quick Service Restaurants
- Chemical Processing
- Packaging
- Automotive
- PVC Welding
- Lamination
- Composite Molding





# JiuYao Electronic Science & Technology (Jiangsu) Co., Ltd.

Add: Industrial Zone, East Shuanggou Town, Hongze District, Huai'an 223121, Jiangsu, China

久耀电子

TEL:+86 137 7512 6941

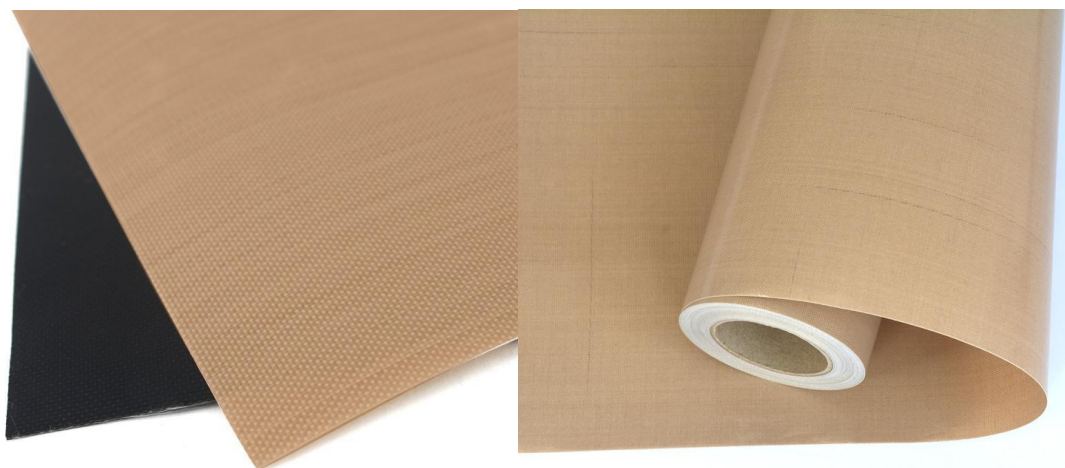
info@ptfe-pcb-laminate.com

www.ptfe-pcb-laminate.com

## PREMIUM SERIES

High level of PTFE content, smooth and glossy surface, quick release

Product code	Color	Max Width (mm)	Thickness (mm)	Weight (g/m <sup>2</sup> )	PTFE Content (%)	Tensile Strength(N/cm)
JY9004AJ	Beige	1250	0.04	80	69	60/52
JY9005AJ	Beige	1250	0.05	83	66	60/52
JY9008AJ	Brown	1250	0.08	160	70	130/110
JY9008WJ	White	1250	0.08	160	70	120/100
JY9008B	Black	1250	0.08	165	71	120/100
JY9013AJ	Brown	1250	0.13	260	60	240/220
JY9013WJ	White	1250	0.13	260	60	200/180
JY9013B	Black	1250	0.13	260	60	200/160
JY9015AJ	Brown	1250	0.15	315	66	270/250
JY9018AJ	Brown	1250	0.18	370	55	350/310
JY9020AJ	Brown	1250	0.20	410	60	280/256
JY9025AJ	Brown	2800	0.25	530	62	500/400
JY9025B	Black	2800	0.25	530	62	500/400
JY9025WJ	White	2800	0.25	450	55	400/340
JY9025LJ	Blue	2800	0.25	500	59	400/340
JY9030AJ	Brown	2800	0.30	625	53	500/360
JY9030WJ	White	2800	0.30	650	55	520/380
JY9030B	Black	2800	0.30	580	50	480/340
JY9036AJ	Brown	2800	0.35	690	52	640/440
JY9036B	Black	2800	0.35	690	52	600/400







# JiuYao Electronic Science & Technology (Jiangsu) Co., Ltd.

Add: Industrial Zone, East Shuanggou Town, Hongze District, Huai'an 223121, Jiangsu, China

久耀电子

TEL:+86 137 7512 6941

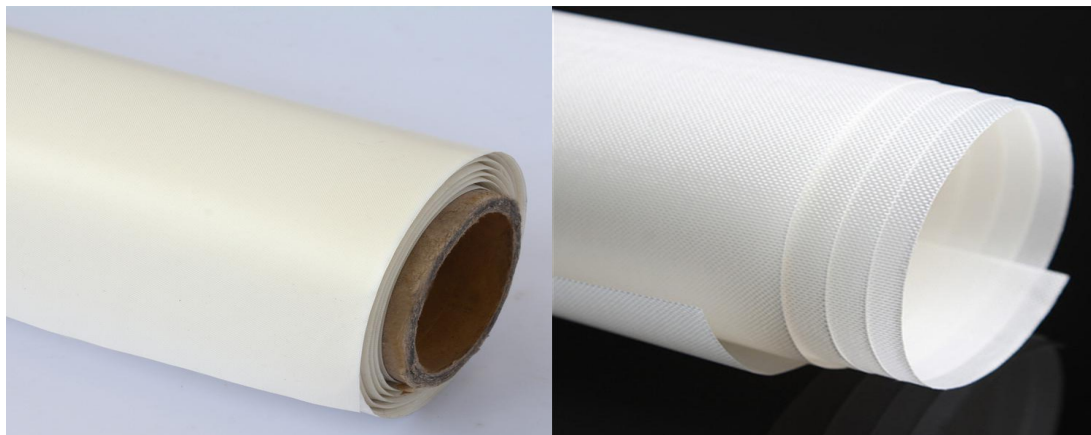
info@ptfe-pcb-laminate.com

www.ptfe-pcb-laminate.com

## INDUSTRIAL SERIES

Medium level of PTFE content, good release and durable, suitable for making into conveyor belts

Product code	Color	Max Width (mm)	Thickness (mm)	Weight (g/m <sup>2</sup> )	PTFE Content (%)	Tensile Strength(N/cm)
JY9010W	White	1250	0.10	140	25	164/160
JY9011W	White	1250	0.11	170	39	164/160
JY9012AJ	Brown	1250	0.12	245	59	230/190
JY9013TR	Brown	1250	0.13	245	57	370/276
JY9013BTR	Black	1250	0.13	245	57	388/284
JY9020W	Brown	1250	0.20	390	49	460/410
JY9023AJ	Brown	1250	0.23	500	60	440/350
JY9020AJ	Brown	1250	0.20	410	60	280/256
JY9040AJ	Brown	2800	0.40	780	57	640/420
JY9040WJ	White	2800	0.40	780	57	540/508
JY9040B	Black	2800	0.40	780	57	600/400
JY9055AJ	Brown	2800	0.53	1000	47	840/700
JY9055WJ	White	2800	0.53	1000	47	700/600
JY9055B	Black	2800	0.53	1000	47	700/600
JY9065AJ	Brown	2800	0.63	1180	51	900/760
JY9065WJ	White	2800	0.63	1180	51	900/760
JY9070WJ	White	2800	0.70	1350	50	960/780
JY9080AJ	Brown	2800	0.78	1550	50	1100/800
JY9080WJ	White	2800	0.78	1550	50	1100/800
JY9090AJ	Brown	2800	0.90	1600	46	1300/1100
JY9090WJ	White	2800	0.90	1600	46	1300/1100
JY9090B	Black	2800	0.90	1600	46	1300/1100
JY9100AJ	Brown	2800	0.98	1250	45	1200/1000
JY9100WJ	White	2800	0.98	1800	32	1360/1260





# Jiu Yao Electronic Science & Technology (Jiangsu) Co., Ltd.

Add: Industrial Zone, East Shuanggou Town, Hongze District, Huai'an 223121, Jiangsu, China

TEL:+86 137 7512 6941 info@ptfe-pcb-laminate.com www.ptfe-pcb-laminate.com

## POROUS SERIES

Allow outgassing of volatile products and promote drying by allowing airflow through the belt. The material is ideal for drying, curing CFRP plate, PVC flooring and bonding inks, pigments and powders to fabrics and non-woven materials.

Product code	Color	Max Width (mm)	Thickness (mm)	Weight (g/m <sup>2</sup> )	PTFE Content (%)	Tensile Strength(N/cm)
JY9006P	Brown	1250	0.06	70	32	100/92
JY9008P	White	1250	0.065	70	32	100/92
JY9010P	White	1250	0.10	130	20	164/160
JY9023P	Brown	1250	0.23	278	26	460/430
JY9025P	Brown	1250	0.25	275	25	400/360



## ANTI-STATIC SERIES

Specially treated to reduce static build up

Product code	Color	Max Width (mm)	Thickness (mm)	Weight (g/m <sup>2</sup> )	PTFE Content (%)	Tensile Strength(N/cm)
JY9008BJ	Black	1250	0.08	160	70	92/84
JY9013BJ	Black	1250	0.13	260	32	210/170
JY9025BJ	Black	2800	0.25	450	55	400/340
JY9030BJ	Black	2800	0.28	610	52	480/340
JY9035BJ	Black	2800	0.32	620	59	560/400
JY9036BJ	Black	2800	0.35	620	52	600/400
JY9040BJ	Black	2800	0.39	770	57	600/400
JY9045HDS	Black	1500	0.43	540	48	600/440



# Jiu Yao Electronic Science & Technology (Jiangsu) Co., Ltd.

Add: Industrial Zone, East Shuanggou Town, Hongze District, Huai'an 223121, Jiangsu, China

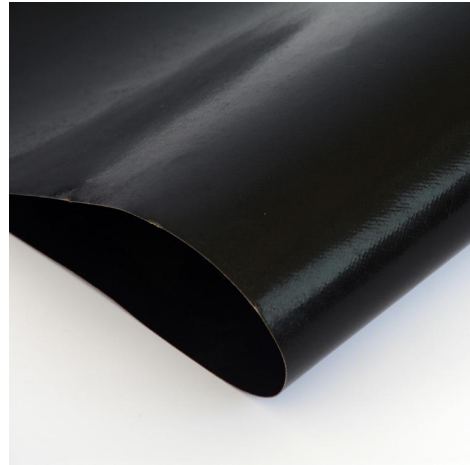
久耀电子

TEL:+86 137 7512 6941

info@ptfe-pcb-laminate.com

www.ptfe-pcb-laminate.com

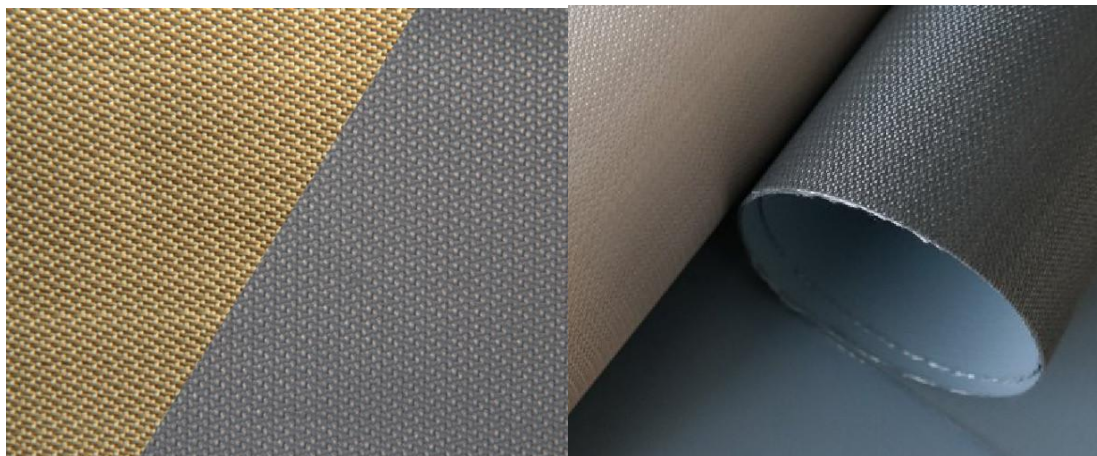
JY9055BJ	Black	2800	0.53	1000	46	700/600
JY9065BJ	Black	2800	0.63	1180	51	800/640
JY9090BJ	Black	2800	0.90	1600	46	1300/1100



## ONE-SIDE COATING SERIES

Specially for insulation jacket and insulation blanket

Item Code	Color	Max Width (mm)	Thickness (mm)	Weight (g/m <sup>2</sup> )	Tensile Strength (N/5CM)	Remark
JY9038HS	Grey	1500	0.38mm	560	3572/2679	Others colors can be customized
JY9040HD	Grey	1500	0.40mm	650	3572/2679	
JY9086HD	Grey	1500	0.86mm	1150	4300/3500	





# JiuYao Electronic Science & Technology (Jiangsu) Co., Ltd.

Add: Industrial Zone, East Shuanggou Town, Hongze District, Huai'an 223121, Jiangsu, China

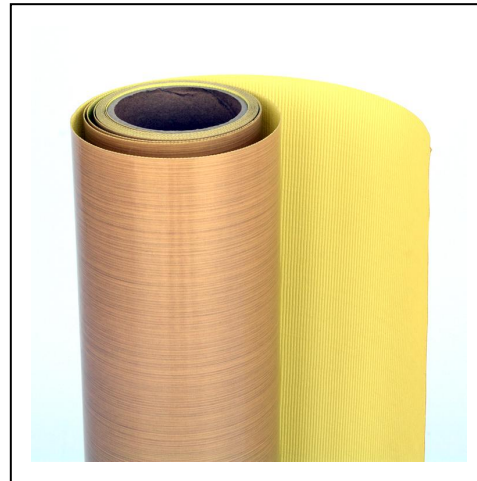
TEL:+86 137 7512 6941 info@ptfe-pcb-laminate.com www.ptfe-pcb-laminate.com

## PTFE ADHESIVE TAPE

PTFE adhesive tape is made of PTFE coated fiberglass or skived PTFE film applied with pressure sensitive silicone adhesive or acrylic adhesive on one side or double sides, the tape provides nonstick surface, high heat resistant (-73 ° C to +260 ° C/-100 ° F to +500 ° F) and excellent electric insulation and tear resistance.

### Applications

- Aerospace
- Poly bag and Shrink Film Packaging
- Electrical Wire Wrapping
- Chemical Processing
- Automotive
- PVC Welding
- Hot Platen Covering for Lamination
- Composite Molding



## SELF ADHESIVE PTFE GLASS TAPE

Woven glass fabric provides mechanical strength and fire retardant, the tape offers excellent release surface, tear resistance, silicone adhesive tapes provide high adhesion strength under high temperature between -70 ° C and +260 ° C (-100 ° to 500 ° F), while acrylic adhesive tapes offer high initial stickiness and works well between -40 ° C to +170 ° C (-104 ° to 338 ° F).

Item Code	Color	Adhesive Type	Fabric Thickness (mm)	Total Thickness (mm)	Adhesion (N/cm)	Temperature (° C)
JY7008	Brown/Black/White /Blue/Green	Silicone	0.08mm	0.13mm	4.4	-70 ~ +260
JY7008C	Brown/Black/White /Blue/Green	Acrylic	0.08mm	0.13mm	3.5	-40 ~ +170
JY7011	Brown/White/Blue/ Green	Silicone	0.11mm	0.16mm	5.4	-70 ~ +260
JY7013	Brown/White/Blue/ Green	Silicone	0.13mm	0.18mm	5.4	-70 ~ +260
JY7013C	Brown/White/Blue/ Green	Acrylic	0.13mm	0.18mm	4.0	-40 ~ +170
JY7015	Brown/Black/White /Blue/Green	Silicone	0.15mm	0.20mm	5.6	-70 ~ +260
JY7018	Brown/Black/White /Blue/Green	Silicone	0.18mm	0.23mm	5.6	-70 ~ +260
JY7020	Brown/Black/White /Blue/Green	Silicone	0.20mm	0.25mm	5.7	-70 ~ +260
JY7025	Brown/Black/White /Blue/Green	Silicone	0.25mm	0.30mm	6.0	-70 ~ +260





# Jiu Yao Electronic Science & Technology (Jiangsu) Co., Ltd.

Add: Industrial Zone, East Shuanggou Town, Hongze District, Huai'an 223121, Jiangsu, China

久耀电子

TEL:+86 137 7512 6941

info@ptfe-pcb-laminate.com

www.ptfe-pcb-laminate.com

JY7030	Brown	Silicone	0.30mm	0.35mm	6.2	-70 ~ +260
--------	-------	----------	--------	--------	-----	------------



## SKIVED PTFE FILM TAPE

High dielectric insulation, excellent chemical resistance and heat resistance. Ideal for Heat-resistant masking, Covering Heat-sealing bars, Heat resistant electrical insulation, Insulation of wires and coil.

Item Code	Color	Adhesive Type	Max Width (mm)	Film Thickness (mm)	Total Thickness (mm)	Adhesion to steel	Temperature (° C)
JY F7008	Grey	Silicone	300	0.03mm	0.08mm	≥13N/4mm	-70 ~ +260
JY F7013	Grey	Silicone	300	0.08mm	0.13mm	≥13N/4mm	-70 ~ +260
JY F7018	Grey	Silicone	300	0.13mm	0.18mm	≥13N/4mm	-70 ~ +260

## COLORFUL SKIVED PTFE FILM TAPE

Item Code	Color	Adhesive Type	Max Width (mm)	Film Thickness (mm)	Total Thickness (mm)	Temperature (° C)
JY F7009C	White/Red/Yellow/	Acrylic	300	0.08mm	0.16mm	-40 ~ +170
JY F7013C	Blue/Black/Brown	Acrylic	300	0.11mm	0.18mm	-40 ~ +170
JY F7018C	Black	Acrylic	300	0.11mm	0.18mm	-40 ~ +170







# JiuYao Electronic Science & Technology (Jiangsu) Co., Ltd.

Add: Industrial Zone, East Shuanggou Town, Hongze District, Huai'an 223121, Jiangsu, China

久耀电子

TEL:+86 137 7512 6941

info@ptfe-pcb-laminate.com

www.ptfe-pcb-laminate.com

## DOUBLE SIDED PTFE TAPE

Item Code	Color	Adhesive Type	Film Thickness (mm)	Total Thickness (mm)	Temperature (° C)
JY F7003D	Translucent	Acrylic	0.25mm	0.35mm	-40 ~ +170
JY F7013D	Translucent	Acrylic	0.51mm	0.61mm	-40 ~ +170
JY F7018D	Translucent	Acrylic	0.76mm	0.86mm	-40 ~ +170



## PTFE CONVEYOR BELT

PTFE conveyor belt combine the nonstick surface and heat resistance(-73° C to +260° C/-100° F to +500° F) of PTFE with high strength and dimension stability of fiberglass, the belt is easier to install and cost-effective, ideal for demands of different industrial conveyor applications, JiuYao provide open mesh PTFE belts, PTFE belt with joint, Two-ply PTFE belts and Seamless fusing belts.

### Applications

- Food processing belts for grilling, and tortilla press
- Textile industry for drying, printing
- Garment fusing press
- Packaging machinery for plastic bag sealing, side sealing, over wrapping, tray wrapping and end sealing
- Shrink packaging heat tunnel
- Screen printing machine, Rotary band sealers,
- Rubber profile extrusion
- PVC and Rubber backed carpet curing
- Solar panel and photovoltaic lamination



# JiuYao Electronic Science & Technology (Jiangsu) Co., Ltd.

Add: Industrial Zone, East Shuanggou Town, Hongze District, Huai'an 223121, Jiangsu, China

久耀电子

TEL:+86 137 7512 6941

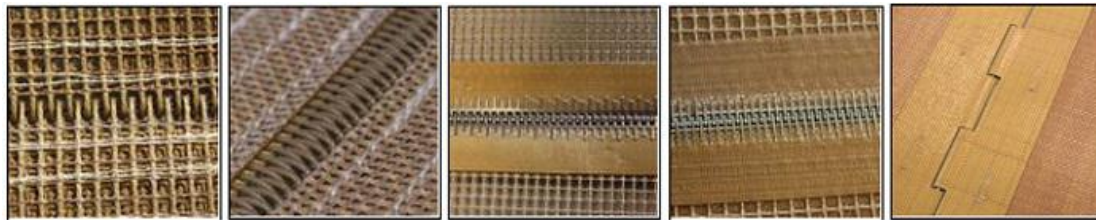
info@ptfe-pcb-laminate.com

www.ptfe-pcb-laminate.com

## MESH HOLE SIZE



## CONVEYOR CONNECTIONS



Bullnose joint

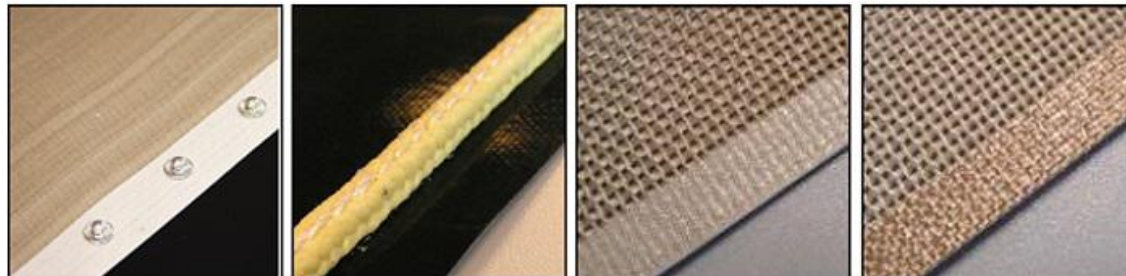
Peek Spiral joint

Alligator joint

Clipper joint

Kevlar Hinge joint

## CONVEYOR EDGE TREATMENT AND GUIDES



Guiding studs

Kevlar guide cord

Film reinforcement

Fabric reinforcement

## OPEN MESH PTFE BELT

Light weight, easy to install and replace, nonstick surface and chemical resistance, perforated



# JiuYao Electronic Science & Technology (Jiangsu) Co., Ltd.

Add: Industrial Zone, East Shuanggou Town, Hongze District, Huai'an 223121, Jiangsu, China

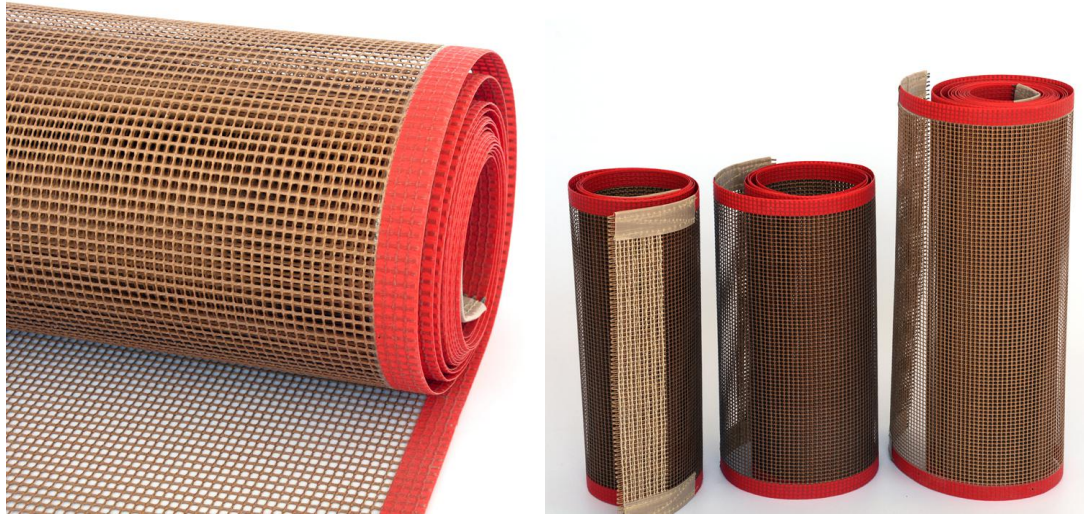
久耀电子

TEL:+86 137 7512 6941

info@ptfe-pcb-laminate.com

www.ptfe-pcb-laminate.com

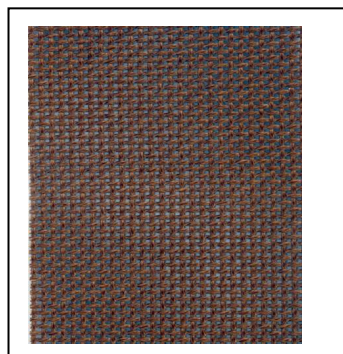
holes to prompt drying.



Product code	Color	Max Width (mm)	Weight (g/m2)	PTFE Content (%)	Tensile Strength(N/cm)
JY6001	Black	1250	160	70	92/84
JY6003	Black	1250	260	32	210/170
JY6004	Black	2800	450	55	400/340
JY6007	Black	2800	610	52	480/340
JY9035BJ	Black	2800	620	59	560/400
JY9036BJ	Black	2800	620	52	600/400
JY9040BJ	Black	2800	770	57	600/400
JY9045HDS	Black	1500	540	48	600/440
JY9055BJ	Black	2800	1000	46	700/600
JY9065BJ	Black	2800	1180	51	800/640
JY9090BJ	Black	2800	1600	46	1300/1100

## JY6001 - 1mm x 1mm

PROPERTY	UNIT	VALUE
Color	Brown/Black	
Weight	Oz/Yd2	12.98
	G/m2	440
Max Width	mm	4000
PTFE Content	%	30
Tensile Strength	N/cm	360/330
Temperature	° C	-70 ~ +260







# JiuYao Electronic Science & Technology (Jiangsu) Co., Ltd.

Add: Industrial Zone, East Shuanggou Town, Hongze District, Huai'an 223121, Jiangsu, China

久耀电子

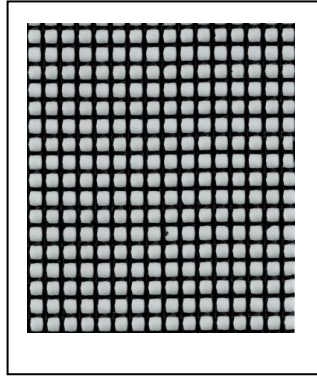
TEL:+86 137 7512 6941

info@ptfe-pcb-laminate.com

www.ptfe-pcb-laminate.com

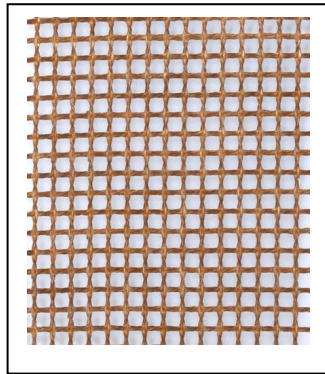
## JY6003 - 4mm x 4mm (Single Weft)

PROPERTY	UNIT	VALUE
Color	Black	
Weight	Oz/Yd2	14.16
	G/m2	480
Max Width	mm	4000
PTFE Content	%	32
Tensile Strength	N/cm	270/340
Temperature	° C	-70 ~ +260



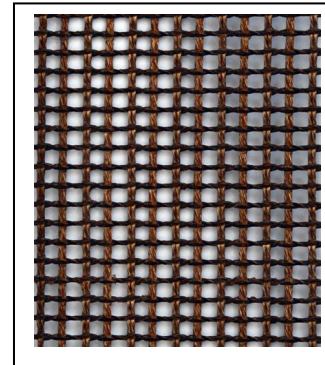
## JY6004 - 4mm x 4mm (Single Weft)

PROPERTY	UNIT	VALUE
Color	Brown	
Weight	Oz/Yd2	14.16
	G/m2	480
Max Width	mm	4000
PTFE Content	%	32
Tensile Strength	N/cm	270/340
Temperature	° C	-70 ~ +260



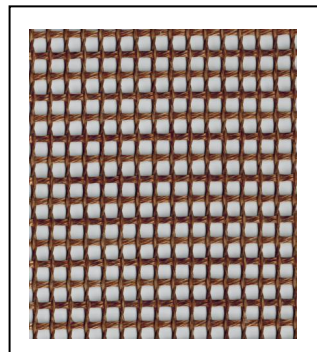
## JY6007 - 4mm x 4mm (Half Kevlar)

PROPERTY	UNIT	VALUE
Color	Brown	
Weight	Oz/Yd2	16.81
	G/m2	570
Max Width	mm	4000
PTFE Content	%	27
Tensile Strength	N/cm	640/460
Temperature	° C	-70 ~ +260



## JY6008 - 4mm x 4mm (Double Weft)

PROPERTY	UNIT	VALUE
Color	Brown	
Weight	Oz/Yd2	16.81
	G/m2	570
Max Width	mm	4000
PTFE Content	%	27.4
Tensile Strength	N/cm	360/600







# JiuYao Electronic Science & Technology (Jiangsu) Co., Ltd.

Add: Industrial Zone, East Shuanggou Town, Hongze District, Huai'an 223121, Jiangsu, China

久耀电子

TEL:+86 137 7512 6941

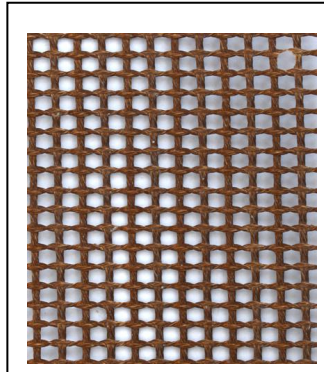
info@ptfe-pcb-laminate.com

www.ptfe-pcb-laminate.com

Temperature	° C	-70 ~ +260
-------------	-----	------------

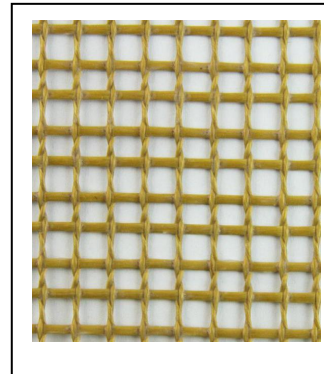
## JY6008S - 4mm x 4mm (Stronger type)

PROPERTY	UNIT	VALUE
Color	Brown	
Weight	Oz/Yd2	21.20
	G/m2	720
Max Width	mm	4000
PTFE Content	%	32
Tensile Strength	N/cm	504/700
Temperature	° C	-70 ~ +260



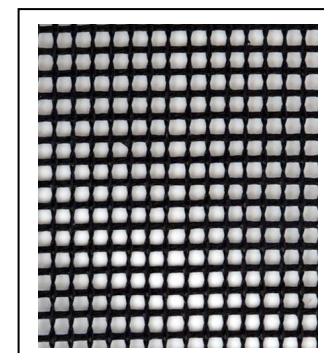
## JY6010 - 4mm x 4mm (Kevlar)

PROPERTY	UNIT	VALUE
Color	Yellow	
Weight	Oz/Yd2	12.10
	G/m2	720
Max Width	mm	4000
PTFE Content	%	40
Tensile Strength	N/cm	660/410
Temperature	° C	-70 ~ +260



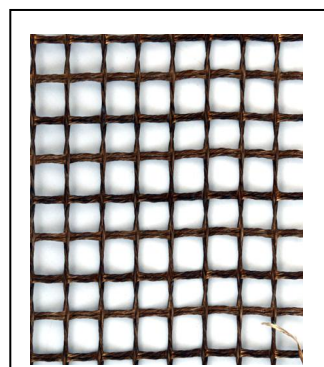
## JY6012 - 4mm x 4mm (Double Weft)

PROPERTY	UNIT	VALUE
Color	Black	
Weight	Oz/Yd2	16.81
	G/m2	570
Max Width	mm	4000
PTFE Content	%	27.4
Tensile Strength	N/cm	360/600
Temperature	° C	-70 ~ +260



## JY6013 - 10mm x 10mm

PROPERTY	UNIT	VALUE
Color	Brown	
Weight	Oz/Yd2	16.81
	G/m2	570





# JiuYao Electronic Science & Technology (Jiangsu) Co., Ltd.

Add: Industrial Zone, East Shuanggou Town, Hongze District, Huai'an 223121, Jiangsu, China

久耀电子

TEL:+86 137 7512 6941

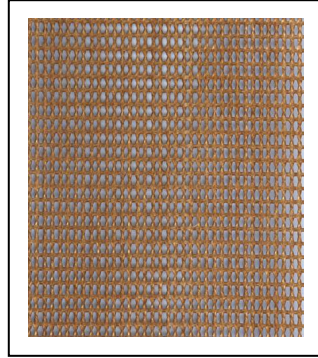
info@ptfe-pcb-laminate.com

www.ptfe-pcb-laminate.com

Max Width	mm	4000
PTFE Content	%	28.84
Tensile Strength	N/cm	280/200
Temperature	° C	-70 ~ +260

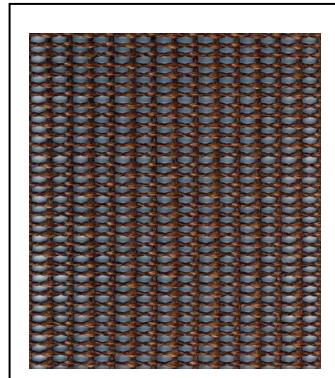
## JY6015 - 2mm x 2.5mm

PROPERTY	UNIT	VALUE
Color	Brown	
Weight	Oz/Yd2	14.16
	G/m2	480
Max Width	mm	4000
PTFE Content	%	31
Tensile Strength	N/cm	446/330
Temperature	° C	-70 ~ +260



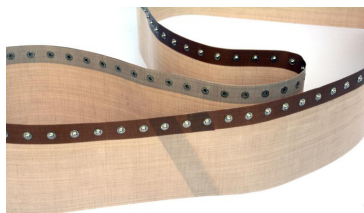
## JY6015S - 2mm x 4mm

PROPERTY	UNIT	VALUE
Color	Brown	
Weight	Oz/Yd2	17.27
	G/m2	585
Max Width	mm	4000
PTFE Content	%	31
Tensile Strength	N/cm	650/330
Temperature	° C	-70 ~ +260



## PTFE Belt with Joint

PTFE belt with joint is made of PTFE coated fiberglass fabric in thickness of 0.010-0.014". 0.003-0.006" is lighter and thinner, suitable to make into small belts which are employed in heat sealing applications that require superior flexibility and heat transfer properties. .015 - .042" fabric is heavier and thicker, suitable for making into belts used in high strength and high load carrying applications.





## Jiu Yao Electronic Science & Technology (Jiangsu) Co., Ltd.

Add: Industrial Zone, East Shuanggou Town, Hongze District, Huai'an 223121, Jiangsu, China

久耀电子

TEL:+86 137 7512 6941

info@ptfe-pcb-laminate.com

www.ptfe-pcb-laminate.com

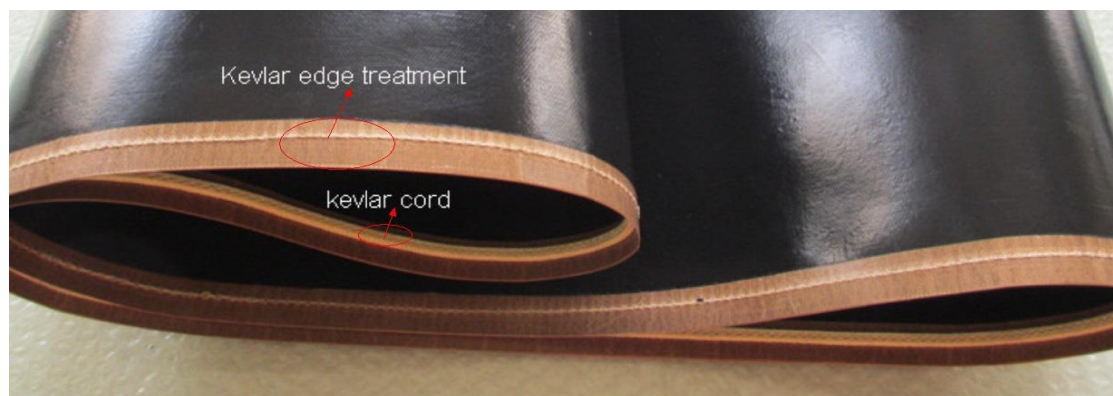
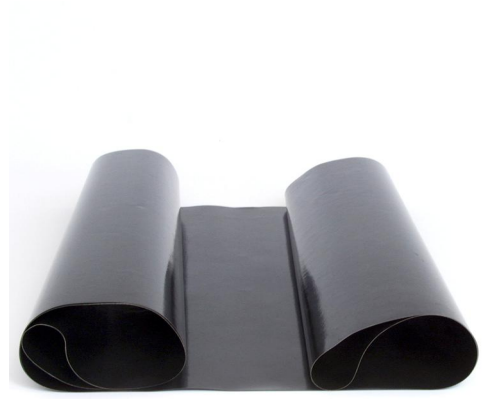
### Two-ply PTFE Belt

Two-ply belt also called PTFE laminated belt is also called made by thin fabrics (Thickness: .003-.006"), laminated belt has at least three times of strength of belt with joint, particularly used in heat sealing applications. The belt is also used on solar industry as the Tabber stringer belt with two colors of PTFE fabric laminated together, inner layer is black and top layer is brown.



### Seamless Fusing Belt

Seamless fusing belt is specially woven in a continuous band, then impregnated with PTFE coating, hence there is no joint on the belt. Coating can be treated with carbon to make the belt surface anti-static. Normal thickness is 0.38mm-0.40mm, max width 1600mm and max length 6700mm. Seamless belt is specially designed for fusing machines such as Hashima, Oshima, Meyer.







# Jiu Yao Electronic Science & Technology (Jiangsu) Co., Ltd.

Add: Industrial Zone, East Shuanggou Town, Hongze District, Huai'an 223121, Jiangsu, China

TEL:+86 137 7512 6941 info@ptfe-pcb-laminate.com www.ptfe-pcb-laminate.com

## SILICONE COATED FIBERGLASS

Silicone coated fiberglass is made of woven fiberglass fabric impregnated with liquid silicone or calendaring with solid liquid, this material is high temperature resistant(-73 ° C to +260 ° C/-100 ° F to +500 ° F), chemical resistant and flexible, widely used as insulation jacket and heat tunnel curtains. Silicone coated fiberglass is divided into silicone coated fiberglass mesh, liquid silicone coated fiberglass and calendaring silicone coated fiberglass.

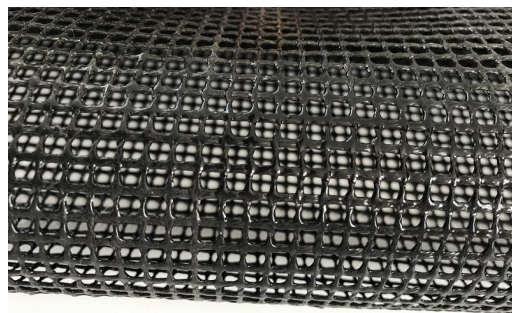
## SILICONE COATED FIBERGLASS MESH

Used in food industry for baking

JY5001 - 1x1mm



JY5004 - 4x4mm



## LIQUID SILICONE COATED FIBERGLASS

Item Code	Color	Coating	Max Width (mm)	Thickness (mm)	Weight (g/m <sup>2</sup> )	Silicone Content (%)
JY5025D	White/Red/Grey/Black	Two sides	1250	0.25mm	401	49
JY5038S	Silver	One side	1250	0.38mm	580	30
JY5040S	White/Red/Grey/Black	One side	1250	0.40mm	530	36
JY5040D	White/Red/Grey/Black	Two sides	1250	0.40mm	580	42
JY5045D	Silver	Two sides	1250	0.45mm	595	32
JY5060D	White/Red/Grey/Black	Two sides	1250	0.60mm	800	32
JY5080D	White/Red/Grey/Black	Two sides	2800	0.80mm	1230	36
Temperature Resistance		-73 ° C to +260 ° C / -100 ° F to +500 ° F				

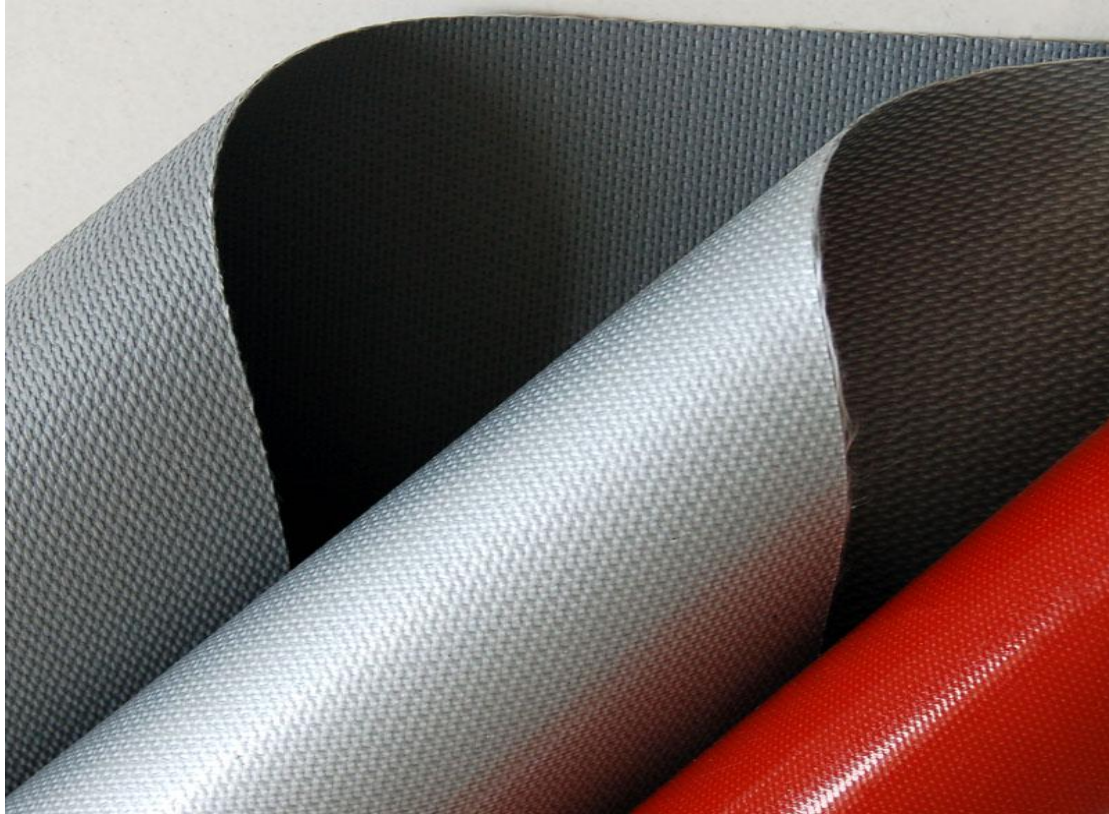




**Jiu Yao Electronic Science & Technology (Jiangsu) Co., Ltd.**

Add: Industrial Zone, East Shuanggou Town, Hongze District, Huai'an 223121, Jiangsu, China

TEL:+86 137 7512 6941 info@ptfe-pcb-laminate.com www.ptfe-pcb-laminate.com



#### CALENDERING SILICONE COATED FIBERGLASS

Item Code	Max Width (mm)	Thickness (mm)	Burst Strength (MPa)	Peeling Strength (N/m)	Flame Retardant	Breaking Strength (N/5CM)
JY5030	1270	0.30+0.03	≥1.2	≥450	FV-0	1800/1400
JY5050	1800	0.50+0.05	≥2.0	≥450	FV-0	2000/1600
JY5110	1250	1.10+0.10	≥2.6	≥450	/	4200/4000
JY5150	1250	1.50+0.10	≥3.0	≥450	/	4800/4400
Temperature Resistance			-73° C to +260° C / -100° F to +500° F			





## Jiu Yao Electronic Science & Technology (Jiangsu) Co., Ltd.

Add: Industrial Zone, East Shuanggou Town, Hongze District, Huai'an 223121, Jiangsu, China

久耀电子

TEL:+86 137 7512 6941

info@ptfe-pcb-laminate.com

www.ptfe-pcb-laminate.com

### PTFE AND SILICONE FOR FOOD

Jiu Yao PTFE and silicone products are used in food industry as baking liner, we use food grade PTFE and silicone coating which makes the material safe to contact food directly. All the products passed FDA and LFGB certificates.

#### BBQ Mat

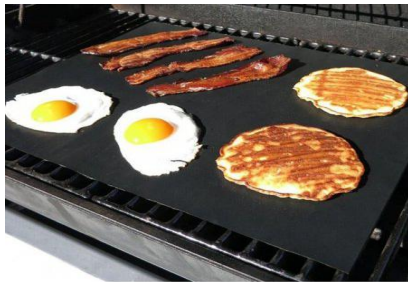
Thickness: 0.20mm

Size: 15.75" x 13.0" (400 x 330mm)

15.75" x 19.7" (400 x 500mm)

15.75" x 23.6" (400 x 600mm)

Any size can be customized



#### Baking Liner

Thickness: 0.08mm, 0.11mm, 0.13mm

Size: 15.75" x 11.8" (400 x 300mm)

15.75" x 23.6" (400 x 600mm)



#### Perforated Silicone Baking Mat

Mesh hole: 1mm x 1mm

Size: US HALF SIZE 11-5/8" x 16-1/2" (295 X 420mm)

US FULL SIZE 16-1/2" X 24-1/2" (420 x 620mm)

GN 1/1 (310 X 510mm)





# JiuYao Electronic Science & Technology (Jiangsu) Co., Ltd.

Add: Industrial Zone, East Shuanggou Town, Hongze District, Huai'an 223121, Jiangsu, China

久耀电子

TEL:+86 137 7512 6941

info@ptfe-pcb-laminate.com

www.ptfe-pcb-laminate.com

## Silicone Baking Mat

Thickness: 0.7mm

Size: TOASTER SIZE 7-7/8" x 10-13/16" (200 x 275mm)

US HALF SIZE 11-5/8" x 16-1/2"(295 X 420mm)

US FULL SIZE 16-1/2" X 24-1/2" (420 x 620mm)

GN 1/1 310 X 510mm



## Toaster Bag

Thickness: 0.08mm, 0.11mm

Size: 160 x 200mm

200 x 250mm

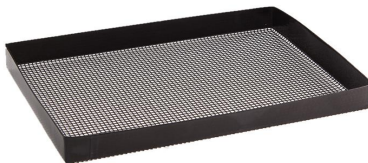


## Oven Basket

Mesh hole: 1x1mm, 2x2.5mm, 4x4mm

Size: US HALF SIZE 11-5/8" x 16-1/2"(295 X 420mm)

US FULL SIZE 16-1/2" X 24-1/2" (420 x 620mm)



## Silicone Toaster Belt







# Jiu Yao Electronic Science & Technology (Jiangsu) Co., Ltd.

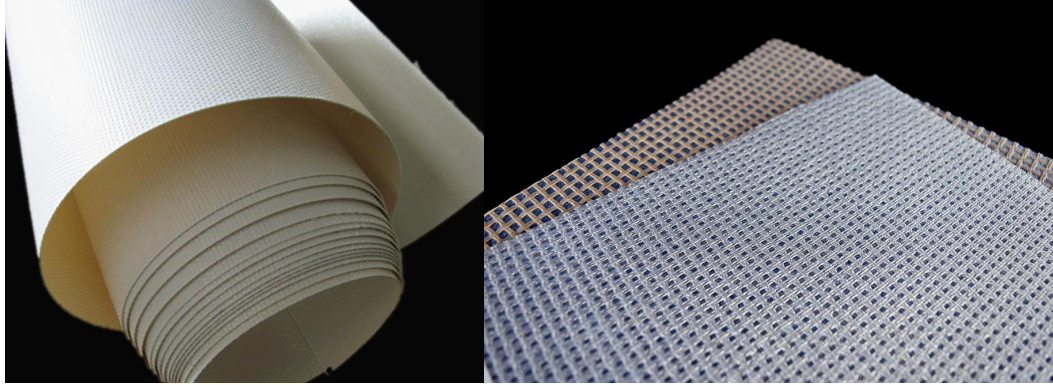
Add: Industrial Zone, East Shuanggou Town, Hongze District, Huai'an 223121, Jiangsu, China

TEL:+86 137 7512 6941 info@ptfe-pcb-laminate.com www.ptfe-pcb-laminate.com

久耀电子

## PTFE ARCHITECTURE MEMBRANE

PTFE architectural membrane is a new type of building material, it is a kind of composite material made of PTFE coating and special strength woven glass fiber in 3 μ m diameter, the material is soft comparing to traditional building material but has higher intensity, thus suitable for various shapes.



### Properties

- Water and weather resistant
- Un-affected by ultraviolet
- Unique self-cleaning performance
- Low and high temperature resistance(700~800° C)
- Fireproof

### Applications

- Museum of science
- International airport parking area, airport smart curb pavilion
- Stadium
- Railway station
- Central park

### PTFE Architecture Membrane

Specs	Standard Data			Test Method
	M900	M700	M500	
Weight (g/m <sup>2</sup> )	1600 ± 160	1300 ± 130	1050 ± 105	DIN EN ISO 2286-2
Thickness (mm)	1.0 ± 0.15	0.8 ± 0.1	0.6 ± 0.1	DIN EN ISO 2286-3
Tensile Strength (N/5cm)				DIN 53354
Warp	9500	8000	6000	
Weft	8500	7000	5500	
Tear Strength (N)				DIN 53363
Warp	500	400	300	
Weft	500	400	300	
Translucency (%)	10%	12%	15%	ASTM E 424
Solar Reflection (%)	70 ± 10	70 ± 10	70 ± 10	ASTM E 424
Basic Cloth	Fiberglass	Fiberglass	Fiberglass	DIN 60001





# Jiu Yao Electronic Science & Technology (Jiangsu) Co., Ltd.

Add: Industrial Zone, East Shuanggou Town, Hongze District, Huai'an 223121, Jiangsu, China

久耀电子

TEL:+86 137 7512 6941

info@ptfe-pcb-laminate.com

www.ptfe-pcb-laminate.com

Coating	PTFE	PTFE	PTFE	/
Color	White ( After exposure to sunlight)			/
Weaving	Plain 1/1	Plain 1/1	Plain 1/1	DIN ISO 9354
Fire Proof Grade	Class B	Class B	Class B	GB 8624-2006

## PTFE Interior Membrane

Specs	Standard Data		
	N600	N500	N300
Weight (g/m2)	1050±105	700±70	500±100
Thickness (mm)	0.6±0.1	0.5±0.1	0.35±0.1
Tensile Strength (N/5cm)			
Warp	5500	4500	3400
Weft	5000	4000	2600
Tear Strength (N)			
Warp	300	350	160
Weft	300	350	110
Translucency (%)	5%	20%	20%
Solar Reflection (%)	80±10	70±10	70±10
Basic Cloth	Fiberglass	Fiberglass	Fiberglass
Coating	PTFE	PTFE	PTFE
Color	White ( After exposure to sunlight)		
Weaving	Plain 1/1	Plain 1/1	Plain 1/1
Fire Proof Grade	Class B	Class B	Class B

## PTFE Open Mesh Membrane

Specs	Standard Data			Test Method
	S900	S600	S300	
Weight (g/m2)	650±50	700±70	330±30	DIN EN ISO 2286-2
Porosity (%)	50±5	25±5	/	DIN EN ISO 2286-3
Tensile Strength (N/5cm)				
Warp	3500	5000	2800	DIN 53354
Weft	3000	4500	2300	
Tear Strength (N)				
Warp	300	350	160	DIN 53363
Weft	300	350	110	
Translucency (%)	>50%	>35%	>30%	ASTM E 424
Solar Reflection (%)	80±10	70±10	70±10	ASTM E 424
Basic Cloth	Fiberglass	Fiberglass	Fiberglass	DIN 60001
Coating	PTFE	PTFE	PTFE	/
Color	White ( After exposure to sunlight)			/
Weaving	/	Plain 3/3	Plain 1/1	DIN ISO 9354
Fire Proof Grade	Class B	Class B	Class B	GB 8624-2006



# Jiu Yao Electronic Science & Technology (Jiangsu) Co., Ltd.

Add: Industrial Zone, East Shuanggou Town, Hongze District, Huai'an 223121, Jiangsu, China

TEL:+86 137 7512 6941

info@ptfe-pcb-laminate.com

www.ptfe-pcb-laminate.com

## PROJECTS OF PTFE MEMBRANE

